

GBX Financial - Standalone Installation

Package Version	Document Date
15.7.0.69	March, 2024

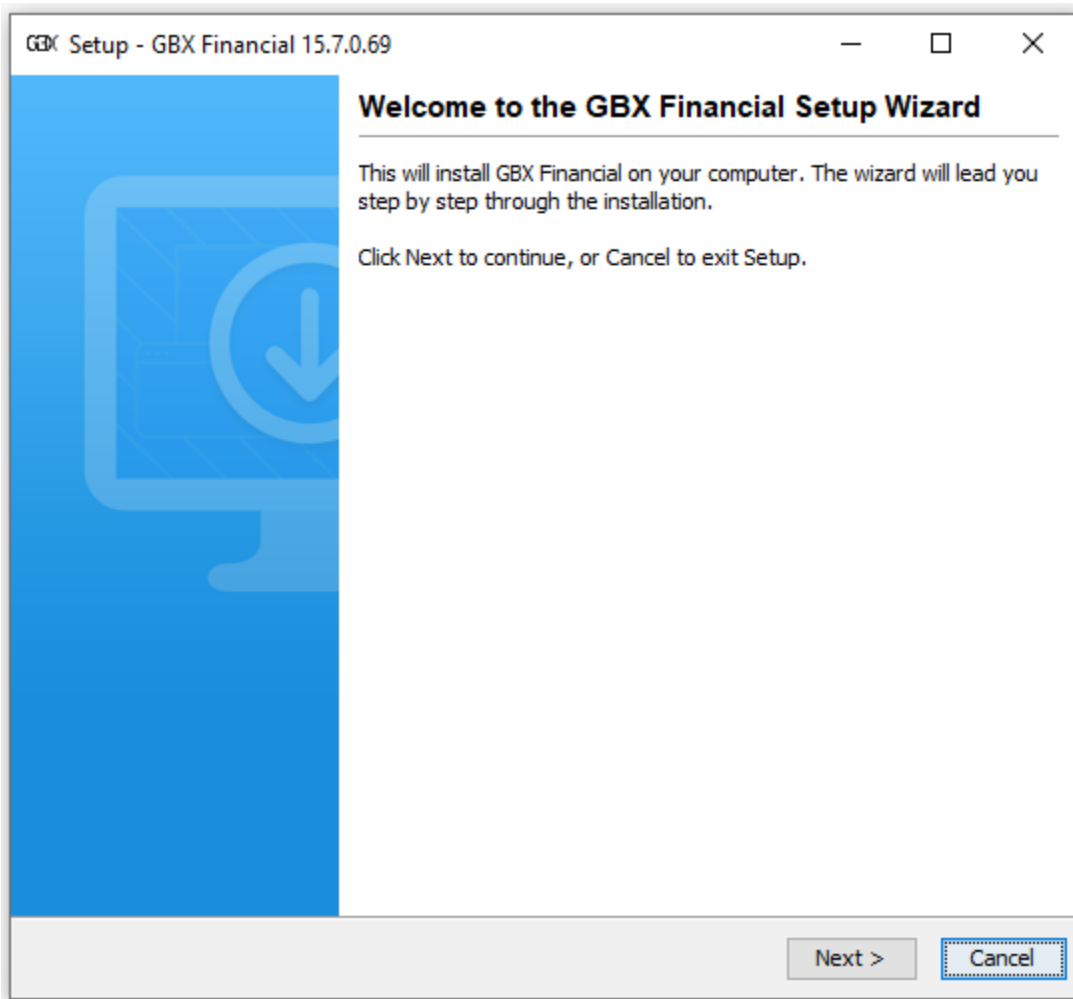
For those clients who prefer not to launch GBX Financial through Java WebStart, BGC Group provides standalone Windows installation. Installation is done by running executable file **gbx-financial-setup.exe**, which sets up either GBX Credit or GBX Rates software onto the desktop.

Installation procedure

Installation procedure provides series of screens where user selects desired options. Each screen may contain buttons "**Next >**" and "**< Back**" which allows to move to next or previous screen. At any time user may exit installation by pressing "**Cancel**" button. Screen title contains version of the current Installer.

"Welcome" screen

This is information screen which indicates that installation process started.



"Installation Type" screen

This provides a list of pre-configured environments to use GBX Financial with. Typically, clients connect to production server for normal business process. Depending on the market flavor select either "PROD - GBX Rates" or "PROD - GBX Credit" option to configure application for such use.

Clients who want to participate in UAT testing of future version should select one of the "UAT - Staging" options. In this case application will be configured to connect to UAT, or "Staging", server.

GBX Setup - GBX Financial 15.7.0.69

Installation Configuration
What kind of GBX Financial configuration do you want to use?

Configuration type: _____

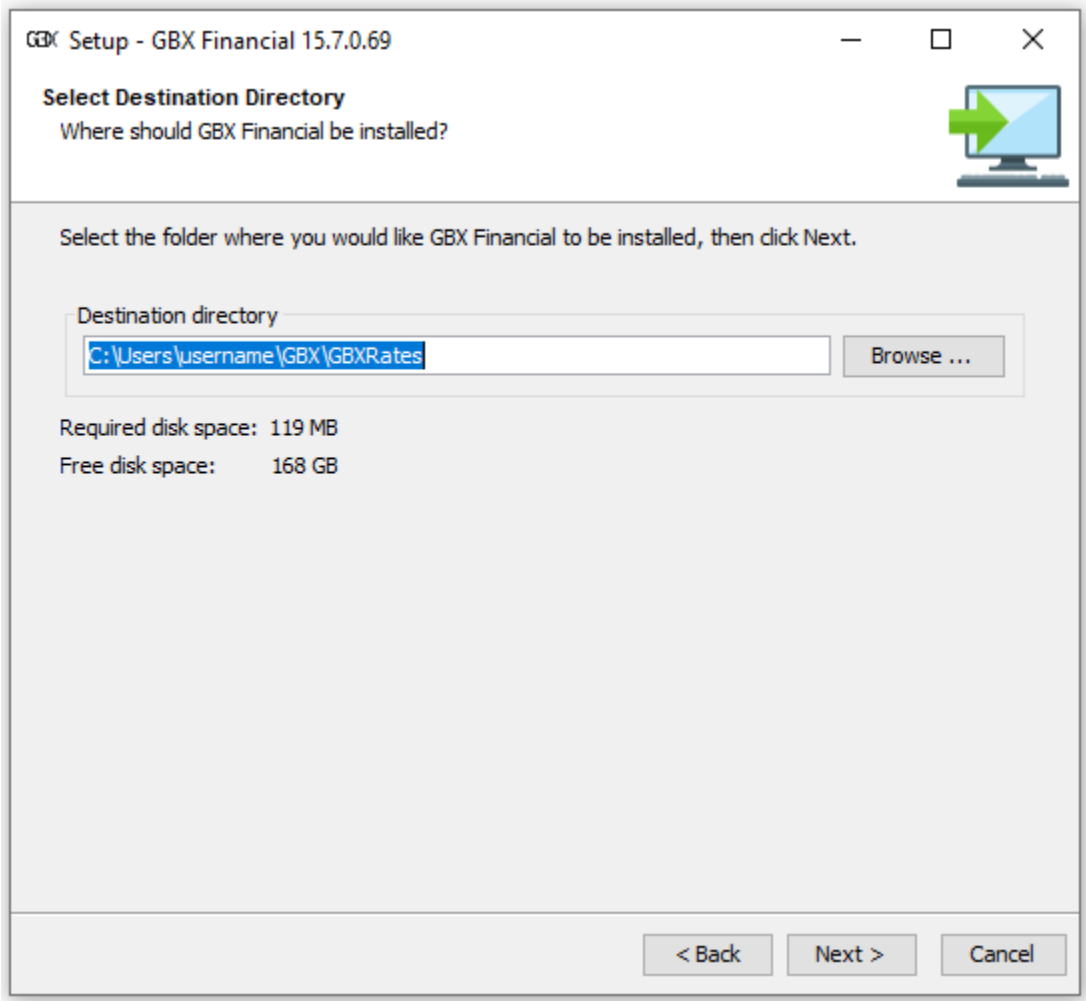
- PROD - GBX Rates
- PROD - GBX Credit
- UAT - Staging 1 (GBX Rates)
- UAT - Staging 2 (GBX Rates)
- UAT - Staging 4 (GBX Credit)
- UAT - Staging 5 (GBX Credit)
- Custom (use only if explicitly instructed)

env name: _____

< Back Next > Cancel

"Destination Directory" screen

This dialog allows to select directory where GBX Financial launcher will be installed. This example assumes the user has selected PROD - GBX Rates.

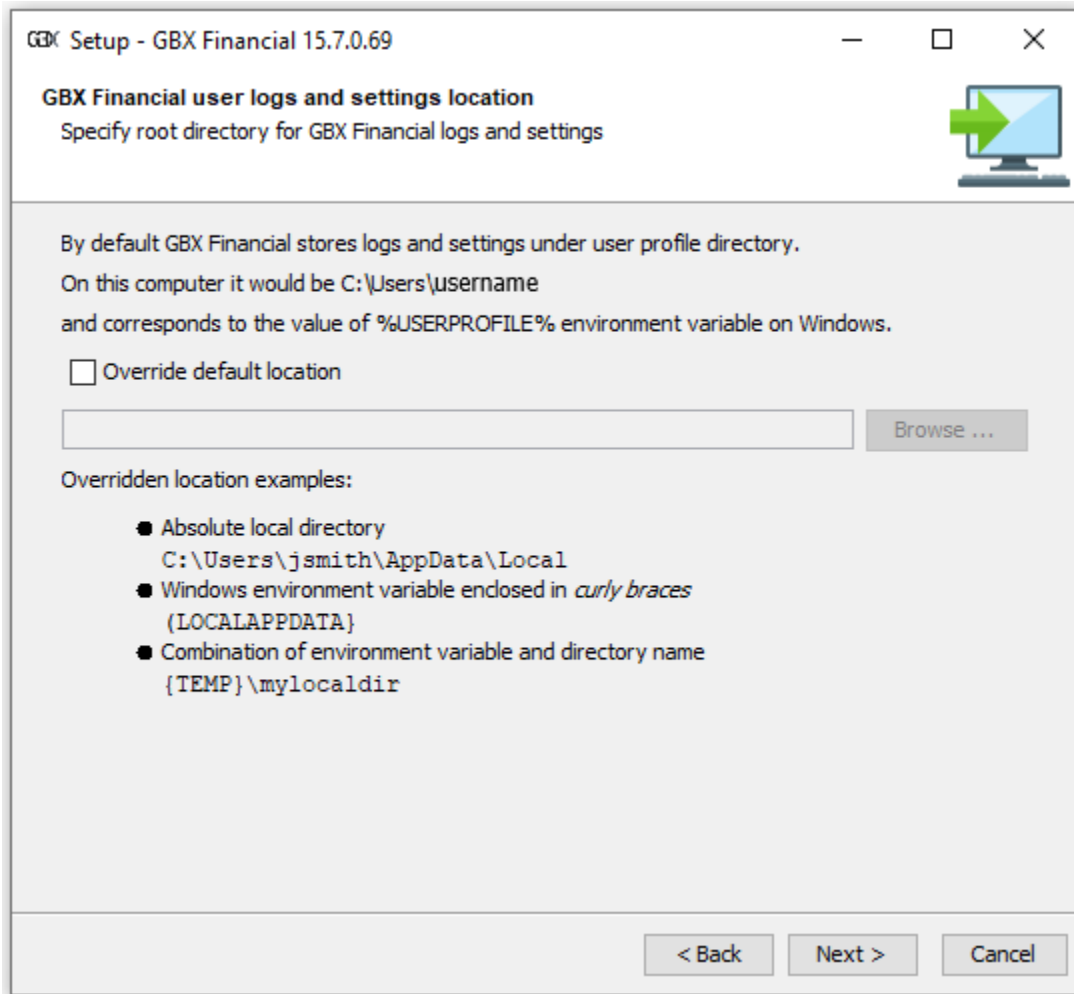


"User logs and setting" screen

When running GBX Financial writes logs into predefined location. This dialog allows to override it.

Environment variables

You can specify Windows environment variables in directory name.
Variable must be enclosed in curly braces, e.g. {MY_VAR} - not with percent signs, e.g %MY_VAR%.



"Connection Settings" screen

This allows to override default connection settings during installation process. This example assumes the user has selected PROD - GBX Rates. The messaging data server value varies depending on what the selection is. For instance,

PROD - GBX Rates	msg-rates.gbxfinancial.com
PROD - GBX Credit	msg-fi.gbxfinancial.com

GBX Setup - GBX Financial 15.7.0.69

Network Connection Settings
Customize connection settings

Messaging Data Server (host[:port])
msg-rates.gbxfinancial.com

Connection type

- SecureConnect (default port: 443)
- TCP (default port: 12606)

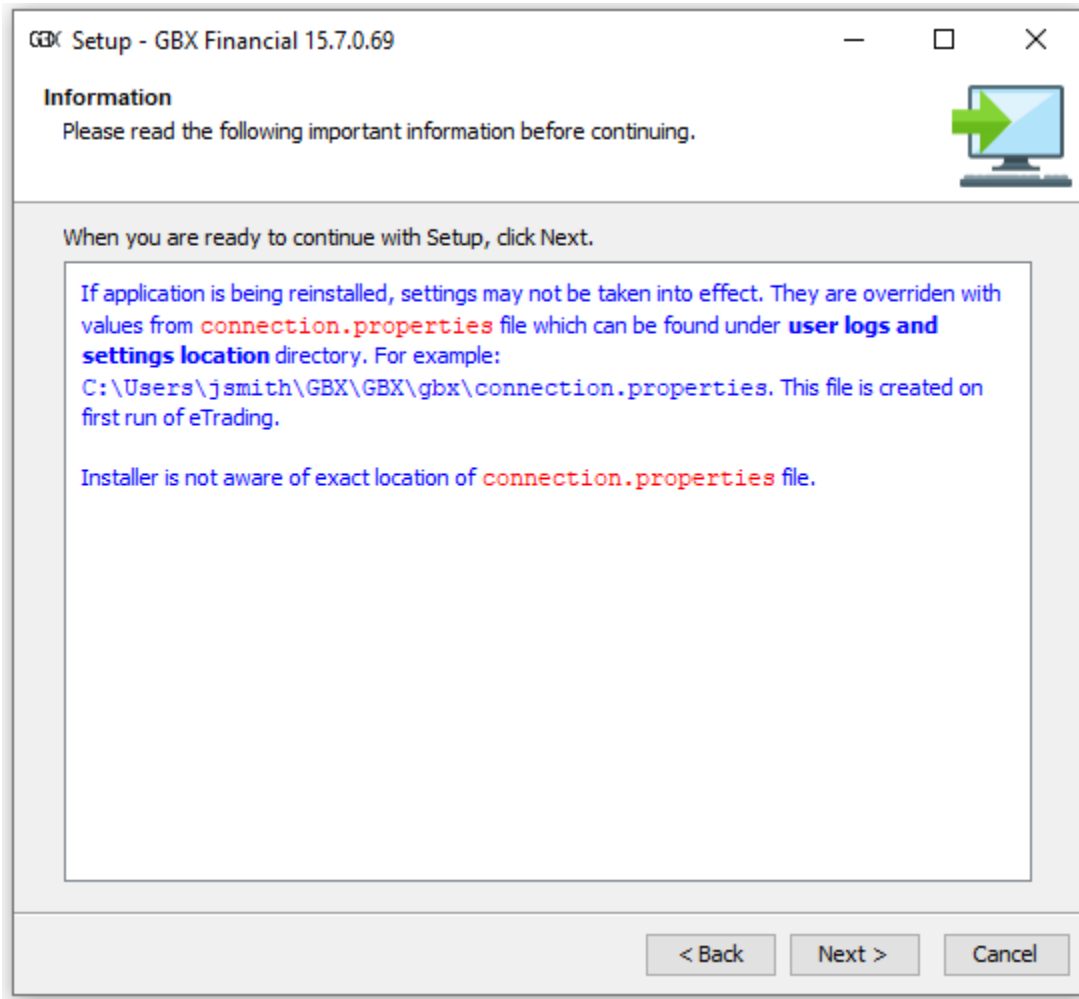
Proxy Settings for SecureConnect

- Default Proxy
- No Proxy
- Custom Proxy (host[:port])

Override BAS URL

< Back Next > Cancel

"Information" screen



GBX Financial launcher allows to override connection settings

At the end of setup Installer saves connection settings in a presumably read-only *.vmoptions file. GBX Financial launcher allows to override those settings but keeps them in writable ***connection.properties** file. Since the Installer is unaware of this file, ***connection.properties** remains unchanged between re-installations. This can be confusing for the user, since she expects to see installation settings. If so, please delete ***connection.properties**.

"Installation Completed" screen

This is final screen informing that installation was done.



Clicking on "Finish" button with "Run GBX Financial now" checked launches GBX Financial login dialog

GBX GBX

GBX

Username:

Password:

Auto-login on this PC

Auto-Launch on Windows startup

For assistance:
New York +1 212 610 2300
London +44 (0) 207 894 8600
Hong Kong +852 3477 7827

eOperations@bgcpartners.com

[Connection Settings](#)

Login **Exit** **Reset**

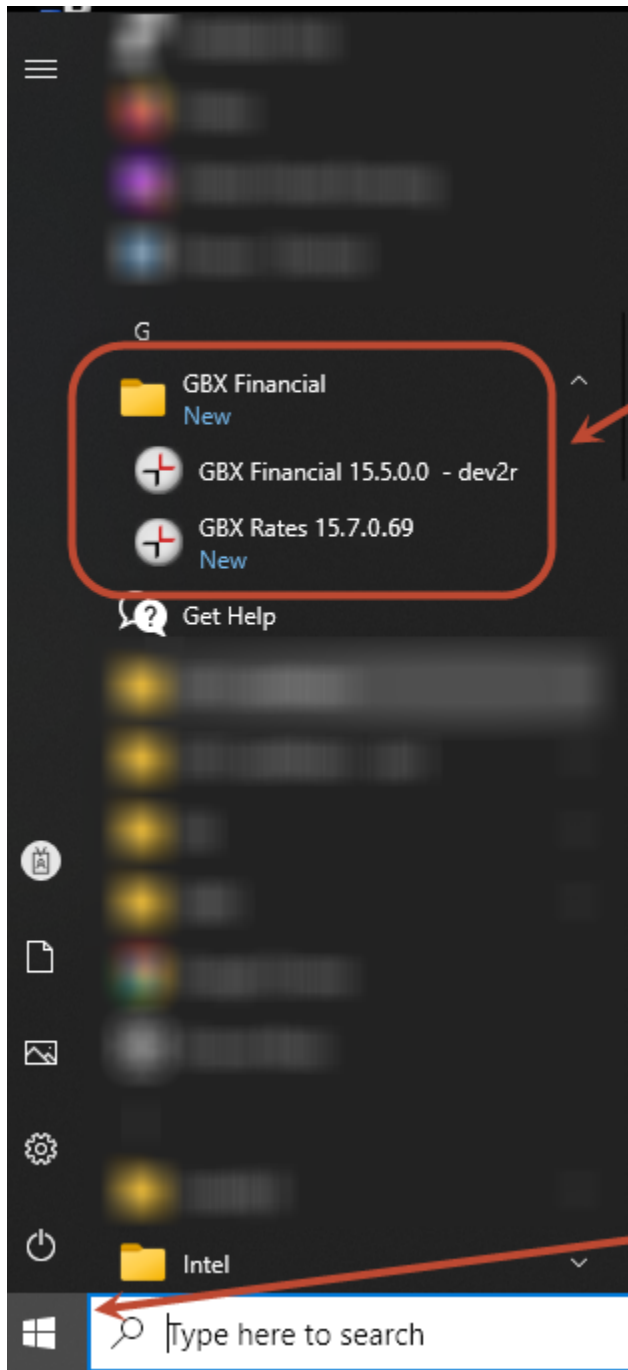
Forgot your Password? Use "Reset" button to create a new password (requires a valid email address on file for your account).

CONSOLIDATED CREDIT & RATES MARKETS

Copyright (C) 2019 BGC Technology International Limited and BGC Partners Inc. All rights reserved

Launching GBX Financial

GBX Financial Launcher will show as a program in "GBX Financial" group of the Windows Start menu



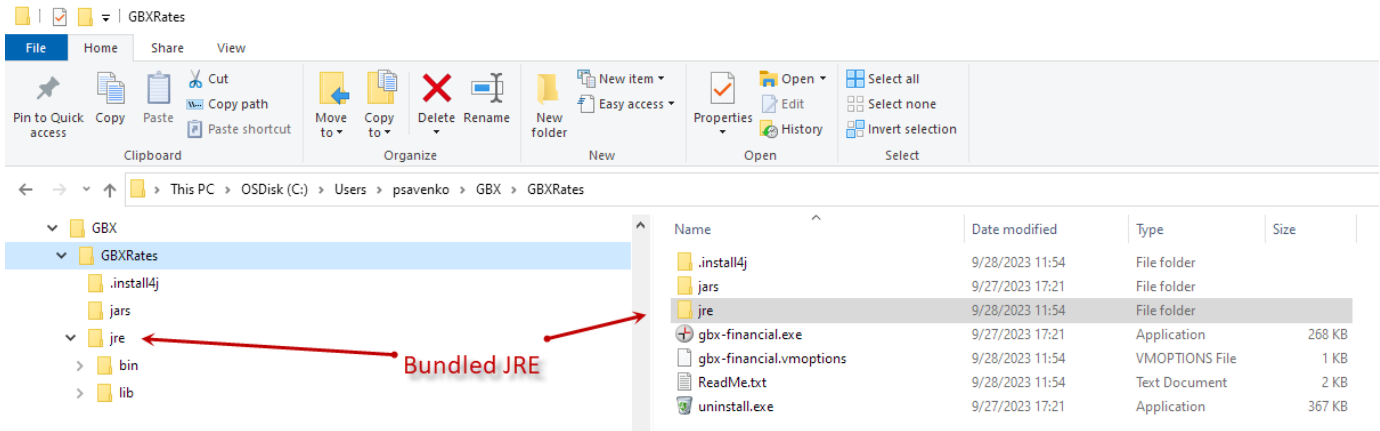
GBX Financial installations

Windows Start menu

snip

Updating bundled JRE

GBX Financial is a java application and requires **Java Runtime Environment (JRE)** present to run. The GBX Financial installer automatically deploys bundled JRE. The JRE can be found under `<installation directory>\jre` directory. Note, that other applications will not be able to use such a JRE.



It is possible to manually update bundled JRE after installation. This can be done using any of the following ways.

Replace bundled JRE directory contents

It requires to replace the contents of `<installation directory>\jre` directory with another JRE.

PROS: This JRE version is available only to the GBX Financial launcher. Other existing JRE's on the system are fully masked.

Delete bundled JRE directory

It requires to delete the `<installation directory>\jre` directory completely. This assumes presence of another JRE on the system. Upon GBX Financial launcher startup JRE's will be searched in the following order:

1. Windows registry and standard locations.
2. Environment variable **JAVA_HOME**.
3. Environment variable **JDK_HOME**.

If no JRE was found, the GBX Financial launcher fails to start.

PROS: This allows to update JRE in a central way for all java applications.